

Bedford Girls School

Refurbishment



Entrance Hall (Before)



ICT Suite



Entrance Hall (After)

Wadys work closely with SDC Special Projects on a number of projects and in 2011 they commissioned Wadys to merge two Harpur Trust schools in Bedford to form Bedford Girls School.

On the former Dame Alice School site and within a tight 7 week schedule, the Wadys team provided:

- Lighting, Emergency Lighting and Power systems
- New Addressable Fire Alarm System
- New Data Installation

This was throughout the whole school including three new ICT suites, new music school which is a grade II listed building and new car park lighting.

The deadline was met with days to spare. SDC, the schools staff and pupils were all very happy with the outcome of their new school.

“This project was a real challenge, Wady’s approached the task in a professional and pro-active manner right from the start. Every one of their employees embraced the team philosophy created on the site, resulting in a fantastic outcome of which all those involved feel incredibly proud”

Mike Hodges - SDC Builders Ltd

Established for over 50 years

Watford Grammar School

New Build

Total value £310K



Ashe Construction asked us to design and install the following services to a free standing Stem building for Watford Grammar School.

Wadys worked with Ashe and our Specialists to deliver the project to a high standard, we held regular meetings to ensure all containment and power requirements for all Specialists including the AV were met and installed.

The lighting design not only complied with current regulations but ensured a bright welcoming environment for the staff and pupils.

Wadys delivered the following services:

- Main Distribution Systems
- General Power Installation
- Lighting Design and Installation
- Emergency Lighting Design and Installation
- Fire & Disabled Refuge Alarms
- Access Control Systems
- IT Infrastructure
- CCTV
- Security Systems



www.wadys.com • 01234 359751

Silsoe Lower School

New Build

Total value £389K - 2016



Wadys worked with Ashe Construction to undertake the building services on a new Lower School in Silsoe.

The school were relocating to a new site on the former Cranfield University Campus within the Village. The proposed move is part of a wider initiative from Bedfordshire Council to provide 6,500 new school places within the next five years.

The Lower school provides 240 places, increased from 135 at the current site and will see the existing Special Education Needs provision, for Behavioural, Emotional and Social Difficulty also be conveyed from the new premises.

Our works included the following services:

- Distribution Systems
- Lighting & emergency lighting installation
- Design & install lighting control systems
- General power installation
- Design & installation of fire alarm system
- Design & installation of intruder alarm system
- Access control
- CCTV
- Data/communication infrastructure



www.wadys.com • 01234 359751

Wren Academy

Design & Build Extension

Total value £578K - 2016

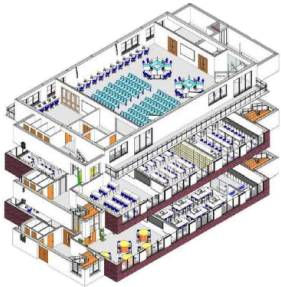


Case Study - Education

Watford Grammar School

New Build

Total value £310K



Ashe Construction asked us to design and install the following services to a free standing Stem building for Watford Grammar School.

Wadys worked with Ashe and our Specialists to deliver the project to a high standard, we held regular meetings to ensure all containment and power requirements for all Specialists including the AV were met and installed.

The lighting design not only complied with current regulations but ensured a bright welcoming environment for the staff and pupils.

Wadys delivered the following services:

- Main Distribution Systems
- General Power Installation
- Lighting Design and Installation
- Emergency Lighting Design and Installation
- Fire & Disabled Refuge Alarms
- Access Control Systems
- IT Infrastructure
- CCTV
- Security Systems

cluded the following services:

- on systems
- emergency lighting installation
- athway lighting
- tallation
- n system
- alarm system
- ntrol installation
- stem
- astructure

St Andrew's Lower School East, Biggleswade

New Build

Total value £266K



Wadys were very pleased to work with Willmott Dixon Construction on the Electrical Installation of this new school in a new development in Biggleswade.

The school had to be delivered urgently, due to demand for places and be a quality option that would last many generations.

The construction process was completed in just 12 months from its commencement in August 2014, we were complete by the end of June 2015 which gave ample time for handover.

Our works included the following services:

- Distribution systems
- Lighting/emergency lighting installation
- Power installation
- Intruder alarm system
- CCTV system
- Data infrastructure
- TV System installation

The new St. Andrew's Lower School East provides 1,567 square metres of teaching space for an additional 300 pupils from September 2015.



Electrical Contractors • www.wadys.co.uk • 01234 359751

Cranfield University

Electrical Services



*“ Wadys have provided Cranfield University with a professional service over 15 years and approach their work with a ‘can do’ attitude
Jim Hurson – Engineering Manager*

Cranfield University have world-class expertise and specialise in: Aerospace, Defence and Security, Energy and Power, Environment and Agrifood, Manufacturing, Transport Systems, Water and Management.

Cranfield University use Wadys as a preferred Electrical Contractor for their electrical needs, this ensures a high standard of work and to guarantee that all works are carried out to meet their site standards.

The services that we provide are the Design and Installation of various Electrical Systems including:

- Large Power Supply Installation to their local Sub-Stations.
- New & Minor Electrical Installations to their vast array of Industrial units, Teaching, Office areas and Student Accommodation.

- Replacing lighting to LED and installing lighting control systems throughout their buildings to provide energy saving and efficiency.
- Upgrading Emergency Lighting systems to comply with BS5266.
- Upgrading Fire Alarm systems to comply with BS5839.
- Various works on the Airfield, Radio Control Tower and Fire Station for the airport.
- Electrical Test and Inspections

Wadys provide a unique service for Cranfield University and have done so for many years.

We have an appointed contracts manager to ensure that there is only one-point contact which is very important to them. This avoids confusion, provides a personal service, continuity and ensures high efficiency.



www.wadys.com • 01234 359751

Summerswood School

New Build



Fire Safety Doors



Classroom



Exterior

Ashe Construction were asked to build a new eight classroom teaching block with various office spaces, kitchen areas, toilets and cloakrooms facilities.

With this type of work being Wady's expertise we were asked by Ashe Construction to assist them in the task of delivering the project in the required timescales.

Wadys provided the following installations:

- LED Lighting and emergency LED lighting
- Power distribution and small power supplies
- Complete data infrastructure including all fibre optic requirements
- Security systems i.e. Intruder alarm, CCTV and door access

The school and pupils are very pleased with the new space and the modern facilities that they now have. It gives them both a wonderful place to teach and learn.

Rory Ingle - Ashe Construction

Established for over 50 years

Great Denham School

New Build



Wadys work regularly on projects with Willmott Dixon Construction Ltd, these projects mainly consist of education and commercial contracts

The Great Denham project was a new build lower school. The challenge was to provide solutions to containment, distribution, power and lighting for the complete school in a short time frame.

We worked closely with the Willmott Dixon design team and engineered a solution that was delivered under budget and on time.

“The co-ordination and value engineering on this project were both substantial undertakings and Wady's excelled in both areas. They provided us with an adept and reliable workforce on site to complement this management and produced a quality finish”

Benjamin Hole -
Willmott Dixon Construction

Established for over 50 years



Wadys Electrical Ltd. 2 Dean Street, Bedford, MK40 3EQ

Tel: 01234 359751 Fax: 01234 355892 Email: info@wadys.co.uk Web: www.wadys.co.uk

Bedford Cluster Schools Phase 1

Design And Build Electrical And Mechanical

Total M&E value £485K



Bedford has seen a large rise in housing construction which has resulted in a growth in the local population – and a rise in pupil numbers. Bedford Borough Council therefore looked at new ways of procuring and delivering cost-effective solutions to address this challenge.

Bedford Borough Council signed up to the innovative Sunesis product. This was a joint venture by Scape, a local authority controlled company, and contractor Willmott Dixon, whom in turn employed Wadys to undertake the Electrical and Mechanical design and build aspect of the work.

Primary school extensions

A programme of primary school extensions which used the Scape Connect standardised classroom approach was started in May 2013. A total of 15 classrooms and two halls were constructed using this unique approach.

Our works included Electrical Design, installation of lighting, power, fire alarm, intruder alarm, door access, audio enhancement systems, data infrastructure and solar panels. In addition to this Wadys managed the Mechanical Design, Underfloor heating, domestic services, above ground drainage, ventilation and air source heat pump installations.

Elstow Lower school has benefitted from a four class Connect block and multi-purpose hall.

Shackleton Lower School had a four class Connect Key Stage 2 block constructed.

Cauldwell Lower School now has a 4 class KS2 Connect block with an extension to the existing hall.

Ridgeway SEN school has had a much needed three class Connect block built with a bespoke internal design for the specific special needs of the students to learn core life skills.

Finally **Cotton End Lower school** which benefitted from internal refurbishment, including a new pupil entrance to the main block, reception alterations and a temporary mobile unit which was relocated from the old Shortstown School.



Electrical Contractors • www.wadys.co.uk • 01234 359751

Holwell Primary School

Refurbishment

Total value £141K - 2015



Wadys worked with Ashe Construction for expansion to the school from 1.5 FE to 2.0 FE New accommodation.

Our works included the following services:

- New Incoming mains from electric board meter
- Design Installation of lighting
- Installation of primary & secondary containment
- Supply and installation of power to dado in classrooms
- Data Installation, CCTV, door access & intruder alarm
- Design of fire alarm linking to existing buildings

Working with Southgate Lighting we designed a complete lighting scheme to meet the schools needs and also to be energy efficient.

Worked with Active Security to complete the CCTV, Intruder & door access.

The project was completed on time and to the satisfaction of our Client and the end user.



www.wadys.com • 01234 359751

Clipstone Lower School

Refurbishment

Total value £123K - 2016



Wadys were happy to be asked by Modplan to produce the Electrical Installation to CBC electrical design - the internal modifications included a new staffroom, drama room and a rear extension classroom block.

Our works included the following services:

- Solar PV street lighting
- Installation of Thorlux smart lighting
- Fire alarm installation
- Door access control to external doors
- Installation of Teacher's learning walls
- Working with CBC we insured the project was finished to client expectations
- Employing the services of contractors to install & commission the data and door access systems
- Using the services of Thorlux to setup and commission the lighting installation



www.wadys.com • 01234 359751

Hartford S E N

Refurbishment*

Total value £292K - 2016



Wadys were pleased to work with **Borras Construction** to provide the electrical requirements to develop a building which had sat derelict for a number of years into 2no school spaces. The first being a special educational needs school and the other a pre-school for the primary school already on site.

*Although classed as a refurbishment, it was treated as a new build from an electrical point of view. The whole building was gutted and installed as new including the electrical supply by the Electricity Board.

Our works included the following services:

- Distribution systems
- Lighting/emergency lighting installation
- Power installation
- Fire alarm system
- Intruder alarm system
- CCTV system
- Data infrastructure
- Access Control Installation
- External Lighting (including car park columns)

The renovated building looks worlds away from the run down derelict building that was sited there. The classrooms are of a nice finish and fit for purpose.



www.wadys.com • 01234 359751

