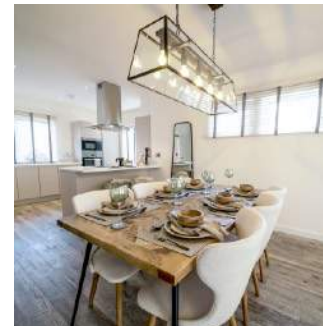
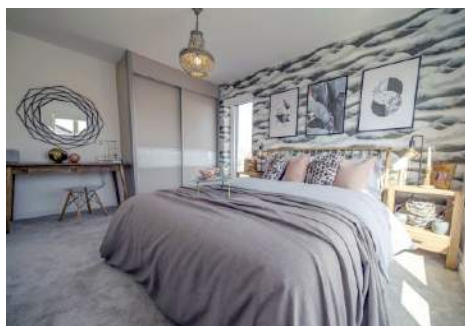


# Countess Way - New Build

Total value £ 367k



**This project is new build residential units, which include 16 two-bedroom flats, 10 three-bedroom houses and 30 four-bedroom houses.**

In addition to the already high specification finish these homes are one of the first in the country to be centered around smart technology. With **Apple® HomeKit™** and intelligent accessories, fitted as standard, these fully connected homes put the lighting, heating, power and home security at the home owners command, wherever they are.

Our works included the following services:

- Electrical Distribution System
- Lighting Emergency Lighting installations Power installations
- AOV control wiring and power supplies
- TV Systems
- Door Access System
- Apple® HomeKit™

Wadys worked very closely with Ashe's site team and all the other trades throughout the project. This helped to ensure that the sequencing of all the trades flowed smoothly which gave a continuity of work to all, but most importantly this enabled the project to be completed on time with a relaxed atmosphere during the final stages of the project.





# Leacroft Extra Care Apartments

## *New Build*

*Total value £263K - 2014*



**Wadys were pleased to work with Housing 21 and Willmott Dixon Housing to provide Electrical Installation for 38 Extra Care apartments and communal areas.**

Our works included the following services:

- Distribution systems
- Lighting/emergency lighting installation
- Power installation
- CCTV system
- Data infrastructure
- Terrestrial TV system



[www.wadys.com](http://www.wadys.com) • 01234 359751

# Heron House Apartments

## *Refurbishment*



**Wadys were pleased to be working on a local project that provided Bedford 78 apartments with a mixture of Private and Social Housing.**

Our works included the following services:

- Electrical Distribution System
- Lighting/Emergency Lighting installations
- Power installations
- Heating installations
- AOV control wiring and power supplies
- TV Systems
- Door Access System

