

Willow Road

New Build Residential Units



Voted **Contractor of the month** for 8 months in a row by the site team.



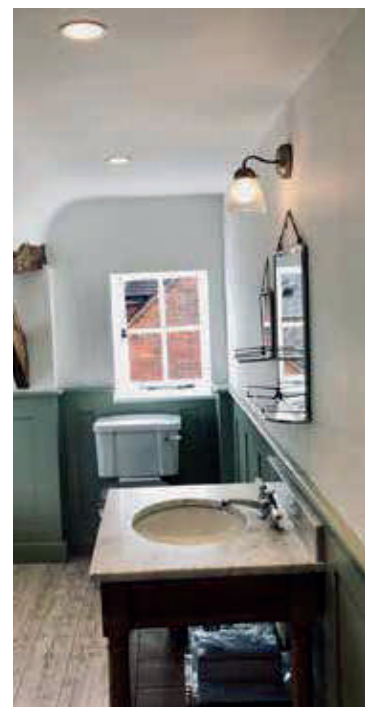
This project consisted of 43 new build residential units, which is a collection of 1, 2 and 3 bedroom houses and apartments, situated at Willow Road Bedford, just one mile from the town centre. Wadys worked cooperatively with Keepmoat's site team and all the other trades throughout the project. This enabled site progress to flow for all trades and provided a high quality of workmanship throughout the properties.

Our works included the following services:

- Electrical Distribution System
- Lighting/Emergency Lighting installations
- Power installations
- TV Systems
- Door Access System
- AOV System

Vine Tree House

Refurbishment & Extension



Wadys were employed by Clarks Construction to carry out the completely new electrical installation at this grade 2 listed property. The existing building was stripped back and renovated including a kitchen extension and new annex building to the side.

Solution:

The finish looks absolutely stunning and was by no means a straight forward domestic electrical installation due to the interesting existing building.

Services we provided:

- Electrical distribution
- Power installation
- Lighting installation
- TV cabling
- Intruder alarm system
- Heating controls wiring

Park Place Residential Apartments

Refurbishment & New Build



This project is part of the regeneration scheme in the heart of Stevenage town centre which comprises of 202 Studio, 1 bedroom and 2 bedroom residential apartments and associated landlords areas. There are also provisions for retail units to the ground floor. The existing building was completely stripped back and then extended upwards and outwards to provide maximum potential.

ThermaSkirt-e is a revolutionary new form of direct electric heating which combines the skirting boards and heating system into one simple discrete system to create a more spacious environment by eliminating radiators from walls. It is controlled by Heatmiser neoStat's that we installed which can then be connected to the Heatmiser neoHub's that we provided to allow the heating to be controlled from a smartphone or tablet.

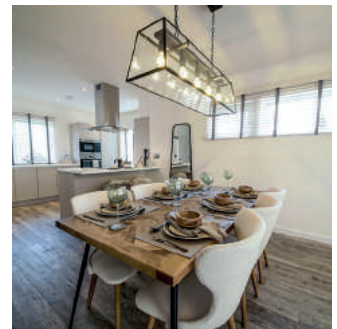
Our works included the following services:

- Electrical Distribution system.
- Power & Lighting installations.
- TV system.
- Video & Audio door entry system.
- Emergency lighting to communal areas.
- Door hold opens to communal corridors.
- AOV system to stairwells.
- Openreach & Hyperoptic cabling infrastructure.
- Thermoskirt-e skirting heating.
- Heatmiser smart heating controls.

Wadys worked closely with ASHE Construction to provide attractive, modern apartments in this new development which stands out in the heart of Stevenage thanks to its fantastic architecture.

Countess Way

New Build Houses & Flats



This project is new build residential units, which include 16 two-bedroom flats, 10 three-bedroom houses and 30 four-bedroom houses.

In addition to the already high specification finish these homes are one of the first in the country to be centered around smart technology. With **Apple® HomeKit™** and intelligent accessories, fitted as standard, these fully connected homes put the lighting, heating, power and home security at the home owners command, wherever they are.

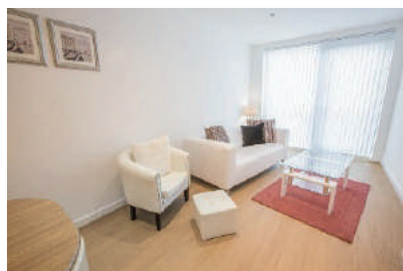
Our works included the following services:

- Electrical Distribution System
- LightingEmergency Lighting installations
- Power installations
- AOV control wiring and power supplies
- TV Systems
- Door Access System
- Apple® HomeKit™

Wadys worked very closely with Ashe's site team and all the other trades throughout the project. This helped to ensure that the sequencing of all the trades flowed smoothly which gave a continuity of work to all, but most importantly this enabled the project to be completed on time with a relaxed atmosphere during the final stages of the project.

Heron House Apartments

Refurbishment



Wadys were pleased to be working on a local project that provided Bedford 78 apartments with a mixture of Private and Social Housing.

Our works included the following services:

- Electrical Distribution System
- Lighting/Emergency Lighting installations
- Power installations
- Heating installations
- AOV control wiring and power supplies
- TV Systems
- Door Access System